



# THE ASEM SUSTAINABLE CONNECTIVITY PORTAL

## Strengthening Asia-Europe links through data and research

### WHAT IS SUSTAINABLE CONNECTIVITY?

Bringing countries, people and societies closer together in a way that contributes to the Sustainable Development Goals



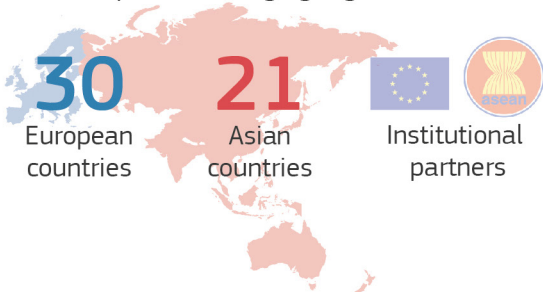
### WHY IS IT IMPORTANT?

Sustainable connectivity promotes:



### ASEM

ASEM is an informal platform for dialogue and cooperation bringing together



# HOW CAN WE MEASURE SUSTAINABLE CONNECTIVITY?

## ASEM SUSTAINABLE CONNECTIVITY



**16** detailed data sets showing flows and connections between ASEM countries

### FOR WHOM?



### HOW CAN YOU USE THE PORTAL?

Drill down from overall connectivity and sustainability scores to individual components and explore **how connectivity relates to sustainability**



Visualise flows and connections between countries on an **interactive connectivity map**

**Zoom in on a country**, see how it is connected with other countries and see **how it scores** on different aspects of connectivity and sustainability



# WHAT BRINGS ASIA AND EUROPE TOGETHER?

## PEOPLE-TO-PEOPLE CONNECTIVITY



**400,000**

internationally mobile university students



**200,000+**

research collaborations



million migrants

## INSTITUTIONAL CONNECTIVITY

VISA



Passport holders from **7** Asian countries can travel visa-free to Europe

Visa openness policies vary in Asia: on average, Asian countries facilitate visa-free or visa-on-arrival to **21** European nationalities

## POLITICAL CONNECTIVITY

European countries have embassies in

**62%**

of Asian countries



Asian countries have embassies in

**55%**

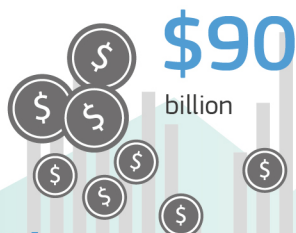
of European countries

## ECONOMIC CONNECTIVITY



**28%**

of total FDI

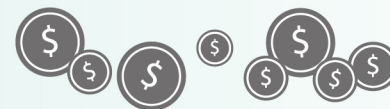


**20%**

of total goods traded

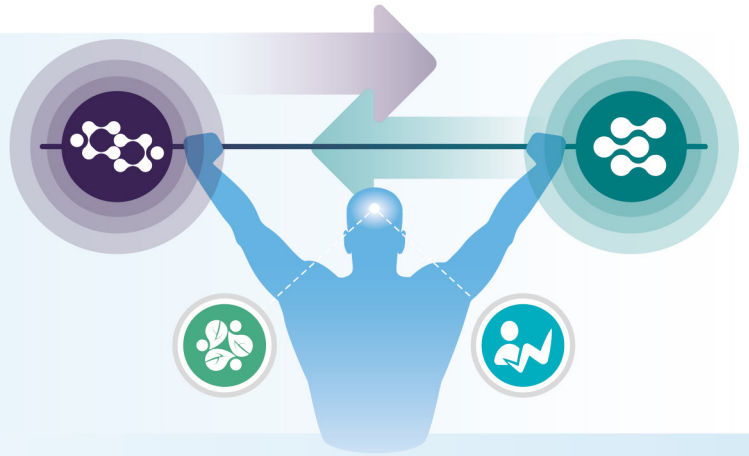
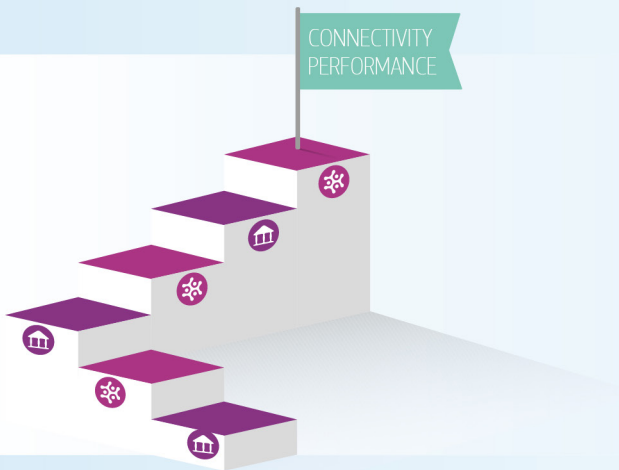
**\$1.5**

trillion



## KEY MESSAGES

- 1 Connectivity and sustainability can **reinforce** each other, but the challenge is to keep **environmental** and **financial sustainability** in mind



- 2 **Institutional** and **political** links provide a basis to strengthen physical, economic/financial and people-to-people connectivity

- 3 **Ideas for improving sustainable connectivity** can be found in all ASEM countries: every country excels at something and **working together** will improve sustainable connectivity



- 4 ASEM countries are strongly connected, but there are **opportunities to strengthen links** between Asia and Europe

## FOR MORE INFO

The ASEM Sustainable Connectivity Portal:

<https://composite-indicators.jrc.ec.europa.eu/asem-sustainable-connectivity>

'Exploring ASEM Sustainable Connectivity – What brings Asia and Europe together?' report:

<https://ec.europa.eu/jrc/en/publication/eur-scientific-and-technical-research-reports/exploring-asem-sustainable-connectivity-what-brings-asia-and-europe-together>

#ASEM